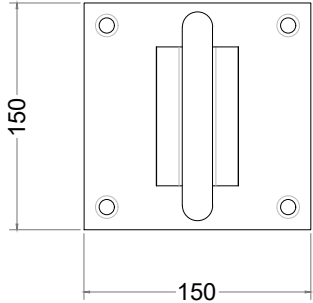


MotoAnchor

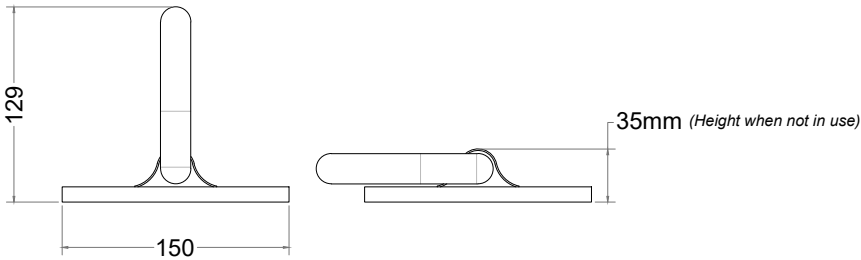
Top View



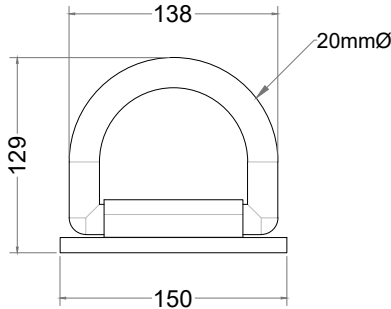
Perspective View



Front View



Side View



Technical information

- Materials:** Heavy Duty Steel
19mm hardened shackle to RC60 spec
- Standard Finish:** Powder Coated Black
- Capacity:** Anchor will fit large chains up to 22mm diameter link, two 16mm chains together, or two plus smaller chains
- Fixing:** Surface Mounted with security screws, shield anchors and steel ball inserts included
- Optional Extras:** Location identifiers, signage
- Accreditation:** Sold secure gold approved product
- BREEAM:** Our products will assist with achieving BREEAM rating
- Product Warranty:** Two years
- Benefits:** MotoAnchor provides a secure ground-fixed locking point for motorcycles and scooters in both commercial and residential settings. Measuring only 35mm in height in its lay-flat position, it is easy to drive or ride over.



Manufactured in the UK

PRODUCT NAME:

MotoAnchor

SCALE @ A3: 1:10	SHEET SIZE: A3	DRAWN BY: AA
CHECKED BY: RA	DATE: 08/06/2022	
PRODUCT NO. :		SP-MCANCH

- All dimensions are in mm unless otherwise stated
- Any dimensions scaled from this drawing are taken at the reader's own risk



01730 719 292
info@bellsure.co.uk
bellsure.co.uk