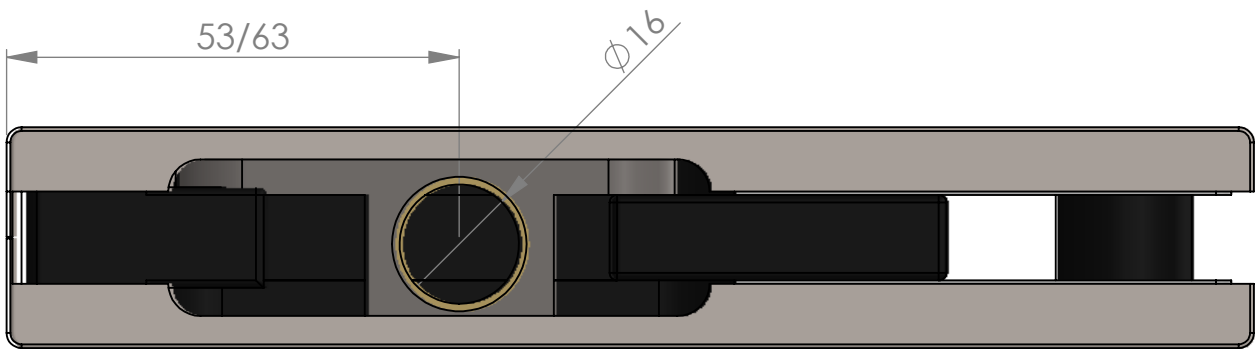


Product Specification Sheet

Pivot Patches | Primeline Top Pivot Patch



Sheet Notes

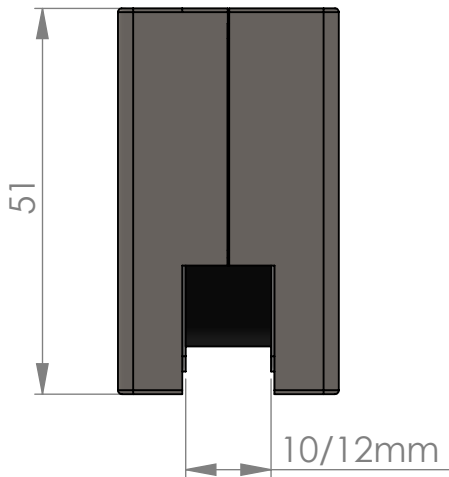
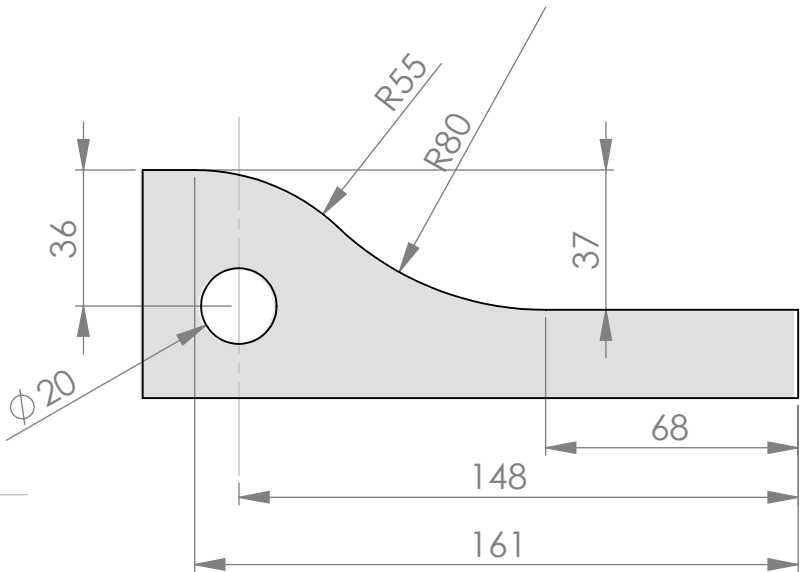
- All dimensions are in mm unless otherwise stated
- Any dimensions scaled from this drawing are taken at readers own risk

Product Key Features

- Material Finish:
- Brushed Stainless Steel
 - Black
- Max Door Weight: 120kg
Max Door Width: 1100mm
Handing: Non Handed
Packaging: Each

Glass Preparation Details

Scale: 1:2



T 01730 719 292
E info@bellsure.co.uk
W bellsure.co.uk

PRODUCT NAME:

Top Pivot Patch

PART NO.

PL20

DRAWING

SCALE: 1:1 SHEET SIZE: A3 DRAWN BY: BK CHECKED BY: MJ DATE: 20/05/13
PROJECT NO. DRAWING NO.