



Give us a call on
01730 719 292

Bellsure Group
Vision House, Bedford Road
Petersfield, Hampshire GU32 3QB

info@bellsure.co.uk
bellsure.co.uk



“

It is a refreshing breath of fresh air to deal with such professional people, who not only take the time to understand our needs but also make sure that quotations are returned in a prompt manner.





The Black Collection

from Bellsure





The Black Collection range from Bellsure

We do all the work for you...

From the initial site survey, we're here to get your project off to a great start. Our dedicated team will take care of everything, providing technical support at each stage of the process.

What we offer:

- Dedicated account support.
- Prompt quote turnaround.
- Create a trade account online or over the phone, pay for goods and services via pro-forma or ask for a credit limit.
- Receive a welcome pack with useful contacts, account details, credit limit and terms and conditions.
- Expert technical advice.
- Free site survey.

Technical expertise and advice:

- Styletech timber range has a 10-year guarantee.
- Specification support – Doorsets and Ironmongery.
- Over 100 years of IM experience across the team.
- Website with product information and specification sheets that include glass preparation details (glass cut-outs).
- Compliance – we always work hard to ensure safe, quality and responsible standards in every environment we work in.





Glass Components

Inspired by the latest interior trends, our design focussed range of interior components combine quality, durability and style. The matte black finish will complete the final touches for any glass or metal framed project.



Timber Components

We operate a full doorset scheduling service, including intelligent packing and tailored logistics, from specification to site. Our complete doorset solutions include our innovative Styletech Ironmongery range.



All other products are universal.



Located in Central London, this sophisticated retro-fit project showcases the latest interior components from The Black Collection. The collection is durable, easy to maintain and adds a luxurious finish to any high-end commercial space.

Handles

Lever Handles



Rhone Lever on Rose
Code: 134.5105.001.121



Loire Lever on Rose
Code: 134.5115.001.121



Elbe Lever on Rose
Code: 134.5102.001.121



Gradient Straight Mitred
Lever
Code: 134.5108.001.121



Black Lever Handle t/s
PL202
Code: 10.301.700PL.BK

Lever Handles



Return to Door 19mm
Sprung Lever on Rose Set
Black
Code: 134.5103.001.121

Pull Handles



Guardsman Handle

Size: 700mm O/A, 600mm C/C

Product Code: 10.501.700.1955.BK

*Timber BF as standard, however other fixing options available.



D Handle

Size: 225mm, BF

Product Code: 132.1401.002.121

Size: 300mm, BF

Product Code: 132.1401.013.121

Size: 425mm, BF

Product Code: 132.1402.014.121

Size: 600mm

Product Code: 10.501.600H.BK

*Timber BF as standard, however other fixing options available.

- Bellsure provide Guardsman and D Shaped Pull Handles for both timber and glass projects. For details call us on **01730 719 292**



Primeline™

Bellsure
Vista

Bellsure
Styletech

Locks and Strikes



Black Primeline Latch
Code: PL200.BK



Black Primeline Locking Latch
Code: PL202.BK



Black Primeline Strike Box
Code: PL220.BK



Black Primeline Corner Lock
Code: USP10.BK



Black Primeline Centre Lock
Code: USP20.BK



Black Primeline Centre Strike
Code: GKP50.BK



Architectural Upright Mortice Latch 76mm
*radiused forends available on request
Code:
sq 115.3704.001.121



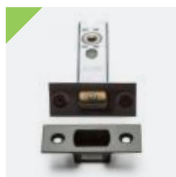
Architectural Euro Profile Sashlock Case 76mm
*radiused forends available on request
Code:
sq 115.3701.001.121



Architectural Euro Profile Deadlock Case 76mm
*radiused forends available on request
Code:
sq 100.1254.257.850



Architectural Bathroom Lock 76mm *radiused forends available on request
Code:
sq 115.3703.001.121



Architectural Mortice Deadbolt 76mm
Code:
sq 115.3702.001.121



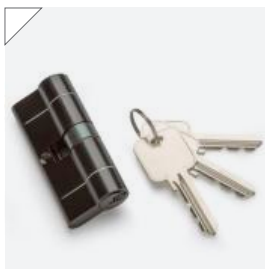
Architectural HD Tubular Mortice Latch 76mm
*radiused forends available on request
Code:
sq 100.1251.528.646



Cylinders



Euro Cylinder and Turn
KD/UMK/KA
60/70/80mm



Euro Double Cylinder
KD/UMK/KA
60/70/80mm



Euro Single Cylinder
KD/UMK/KA
45mm

Stock codes	Euro Cylinder + Turn	Euro Double C	Euro Single C	KD	UMK	KA	45	60	70	80	G	T
10.603KD.BK		✓		✓				✓			✓	
10.601BKD.BK	✓			✓				✓			✓	
10.603KA.BK		✓				✓		✓			✓	
10.601KA.BK	✓					✓		✓			✓	
116.3803.004.221	✓			✓					✓			✓
116.3802.004.221		✓		✓					✓			✓
116.3803.024.221	✓				✓				✓			✓
116.3802.024.221		✓			✓				✓			✓
116.3803.044.221	✓					✓			✓			✓
116.3802.044.221		✓				✓			✓			✓
116.3803.007.221	✓			✓						✓		✓
116.3802.007.221		✓		✓						✓		✓
116.3802.027.221		✓			✓					✓		✓
116.3803.027.221	✓				✓					✓		✓
116.3803.047.221	✓					✓				✓		✓
116.3802.047.221		✓				✓				✓		✓
116.3801.007.221			✓	✓			✓					✓
116.3801.027.221			✓		✓		✓					✓

Key: KD Keyed to Differ UMK Under Master Key KA Keyed Alike



Primeline™

Bellsure
Vista

Bellsure
Styletech

Pivots and Hinges



Black Primeline Bottom
Pivot Patch
Code: PL10.BK



Black Primeline Top Pivot
Patch
Code: PL20.BK



Primeline Pivot Set RH
Black
Code: PL592.BK



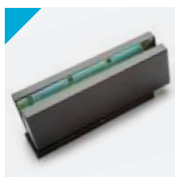
Primeline Pivot Set LH
Black
Code: PL593.BK



Primeline 100mm Glass
Hinge LH Black
Code: PL101LH.BK



Primeline 100mm Glass
Hinge RH Black
Code: PL101RH.BK



Primeline Black
Micro-Close Bottom Patch
Code: PLM10SS.BK



Black Internal Glass Door
Hinge
Code: PL1310.BK



Black Primeline
self-closing hinge to suit
rebated frame
Code: PL806.BK



Grade 13 Ball Bearing
Hinge
Square corners,
102x76x3mm
Code: 101.2101.001.221



EVO hinge

The Hydraulic self-closing hinge

Our dynamic NEW Hydraulic self-closing hinge comes with two adjustment screws, one for the latching speed and one for the closing speed - giving greater control over the closing action of the door. With options for hold open at 90° or hold open at 180°, the ability to hold doors up to 120kg is available in a range of finishes - this unique product will set your project apart. Please ask us for more information.



Glass-to-frame



Glass-to-glass

HINGE OPTIONS

Glass-to-frame	Product Code	Glass-to-glass	Product Code
Evo Hinge 90 Degree Left Hand GTF BLK	1.022.0E10.0LH.21	Evo Hinge 90 Degree Left Hand GTG BLK	1.022.0E50.0LH.21
Evo Hinge 90 Degree Right Hand GTF BLK	1.022.0E10.0RH.21	Evo Hinge 90 Degree Right Hand GTG BLK	1.022.0E50.0RH.21
Evo Hinge 180 Degree Left Hand GTF BLK	1.022.0E11.0LH.21	Evo Hinge 180 Degree Left Hand GTG BLK	1.022.0E51.0LH.21
Evo Hinge 180 Degree Right Hand GTF BLK	1.022.0E11.0RH.21	Evo Hinge 180 Degree Right Hand GTG BLK	1.022.0E51.0RH.21
Evo Hinge E10 Dummy Left Hand GTF BLK	1.022.SE10.0LH.21	Evo Hinge Dummy Left Hand GTG BLK	1.022.SE50.0LH.21
Evo Hinge E10 Dummy Right Hand GTF BLK	1.022.SE10.0RH.21	Evo Hinge Dummy Right Hand GTG BLK	1.022.SE50.0RH.21



Duo Offset



**Primeline Black Offset
Bottom Pivot LH**
Code: PL106.BK



**Primeline Black Offset
Bottom Pivot RH**
Code: PL107.BK



**Primeline Black Bottom
Offset Pivot Extended LH**
Code: PL106EXT.BK



**Primeline Black Bottom
Offset Pivot Extended RH**
Code: PL107EXT.BK



**Primeline Black Offset Top
Pivot LH**
Code: PL118.BK



**Primeline Black Offset Top
Pivot RH**
Code: PL119.BK



**Primeline Black Offset Top
Centre Pivot LH**
Code: PL152.BK



**Primeline Black Offset Top
Centre Pivot RH**
Code: PL153.BK



Ancillary



Black Pedestal Floor Doorstop
Code: CM6002.2107.BK



Black Fixed Top Centre
Code: GP10.BK



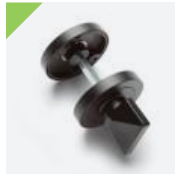
Black Angle Head Stop
Code: 2116AHS.BK



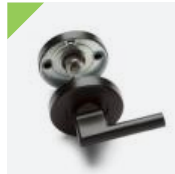
Euro Profile Escutcheon
50mm diameter
Code: 135.1301.001.121



Lever Key Escutcheon
50mm diameter
Code: 135.1302.001.121



Turn & Release Set Without indicator
Code: 135.1305.001.121



Disabled Turn & Release Set with Indicator - DDA
Code: 135.1306.001.121



Finger Plate 350 x 75mm
drilled for fixing
Code: 100.1258.101.364



Skirting Door Stop
70mm
Code: 100.1251.604.284



Peg Coat Hook Black
Code: 100.1258.847.144



L/A Flush Bolt Black
200 x 25mm
Code: 103.8200.001.121



L/A Flush Bolt Black
150 x 19mm
Code: 103.8150.001.121

Door Controls



Budget Overhead Door Closer Fixed Power Size 3,
CE approved,
BS EN 1634, BS EN 1154
Code: 125.5104.016.121



Overhead Door Closer
Power Size 2-5, CE
approved, BS EN 1634, BS
EN 1154
Code: 125.5104.007.121



The Black Collection