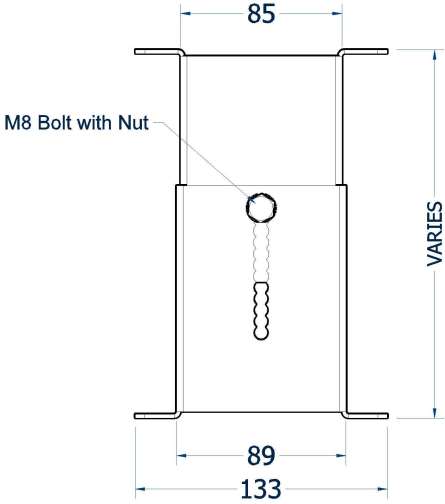
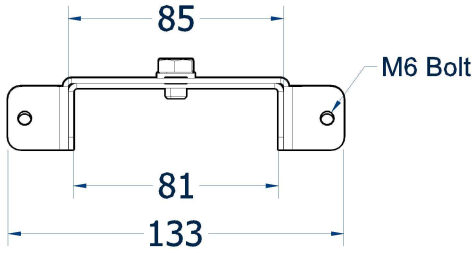


# Parkis Mounting Extension

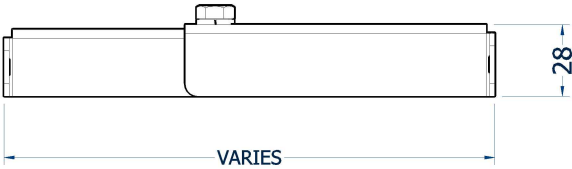
Top View



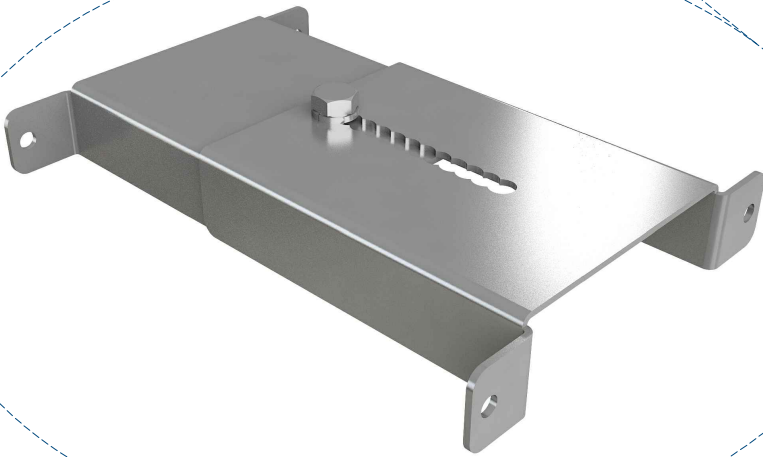
Front View



Side View



Perspective View



## Technical information

**Fixing options:** This accessory takes Parkis from 13 cm (5.12") to 20 cm (7.87") away from the wall surface.

**Material:** Stainless Steel

**Other:** The Parkis Mounting Extension allows multiple Parkis to be placed next to each other to maximise cycle parking efficiency, it allows handlebars to avoid touching.

PRODUCT NAME:

**Parkis Mounting Extension**

SCALE: NTS	SHEET SIZE: A3	DRAWN BY: AA
CHECKED BY: KD	DATE: 22/06/2020	
PRODUCT NO. :	BSS-T-PKSME-90-001	

- All dimensions are in mm unless otherwise stated
- Any dimensions scaled from this drawing are taken at the reader's own risk