



CASE STUDY HALLSVILLE QUARTER, LONDON

THE PROJECT

Hallsville Quarter is a brand new neighbourhood in the heart of Canning Town, in which Bellsure was asked to supply and install a range of cycle storage products. Following a £3.7 billion regeneration project, Canning Town is set to become an exciting place to call home. Using the experience and knowledge of the Streetsure team, we offered a variety of products that suited the specific elements of the brief.

As requested by Bouygues UK Ltd, we provided a Phase 1 quote on bespoke cycle shelters with two-tier cycle racks. Once Phase 2 was completed, we then provided an extension to the cycle shelter to create more room for cycle storage. We also supplied CAD designs and .dwg files to build into the clients BIM model.

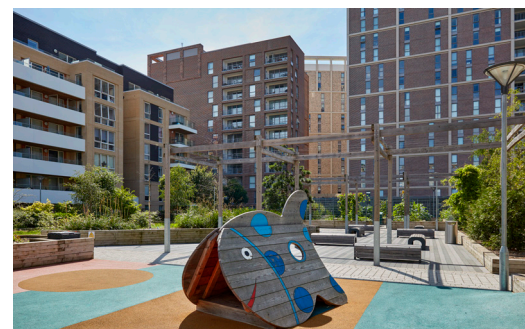
THE SOLUTION

The Streetsure team secured the contract and project managed the supply and install of these products to budget and within an agreed timeframe.

We supplied Orion Cycle racks to this project due to their robustness and compatibility. These were space planned strategically to fit as many spaces into the area as possible. We also designed and installed a secure shelter with Syberian Larch as the specified timber for the shelter.

Our installers worked alongside the site manager to ensure a smooth snag free handover - complete with an enhanced operations & maintenance manual.

For any advice on space planning, CAD .dwg files or the products specified in this case study please contact info@bellsure.co.uk



We consult, design and build both bespoke and standard solutions for a range of projects. Supply only and supply and install packages available.

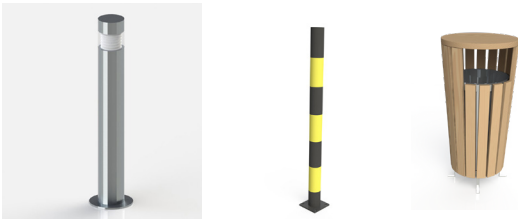
BENCHES & PLANTERS



CYCLE PARKING



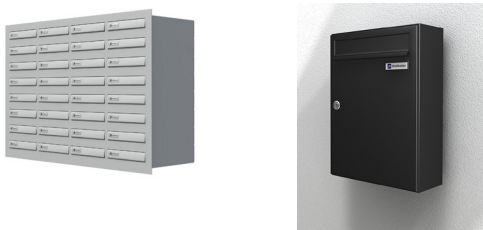
BINS & BOLLARDS



SHELTERS & ENCLOSURES



MAIL BOXES & PARCEL LOCKERS



GREEN ROOF SHELTERS



URBAN RELAY SMART LOCKERS



CAR PARK PRODUCTS

