



CASE STUDY NANTLY HOUSE, HOUNSLOW

THE PROJECT

Nantly House is part of a 90 million pound housing development project by the London Borough of Hounslow. The Borough selected Willmott Dixon to support their development, which would see the creation of 844 homes. The first site to be developed was Nantly House on Lampton Road, a new build block of 74 flats, featuring a varied palette of bricks applied to a stepped facade with bespoke feature balconies. Bellsure were asked by our client, Be Living (EcoWorld), to provide the cycle storage for this project.

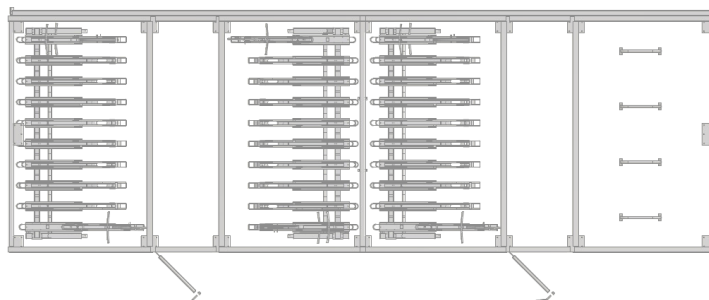
As requested, we provided quotes on bespoke cycle shelters with composite cladding and two tiered cycle storage. We also supplied CAD designs and .dwg files to build into the clients BIM model. This included a CAD file that specified materials along with our recommendations, panel details and security fixings.

THE SOLUTION

The Streetsure team secured the contract and project managed the supply of the bespoke cycle storage solution to suit EcoWorlds budget and time frame.

For the cycle storage, we supplied our Classic double decker cycle racks and Sheffield stands. These were space planned strategically to fit as many spaces into the area as possible, and provide a greater return on investment for our client.

Our durable cycle shelters were the chosen option for this design-led project. The shelter was a bespoke steel frame with Rhinestone Oak composite cladding. This design was chosen to provide longevity and minimal maintenance to the life cycle of this product.



We consult, design and build both bespoke and standard solutions for a range of projects. Supply only and supply and install packages available.

BENCHES & PLANTERS



CYCLE PARKING



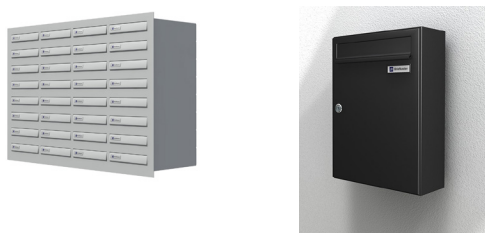
BINS & BOLLARDS



SHELTERS & ENCLOSURES



MAIL BOXES & PARCEL LOCKERS



GREEN ROOF SHELTERS



URBAN RELAY SMART LOCKERS



CAR PARK PRODUCTS



BESPOKE A range of standard and bespoke sizes available • Concrete, timber, powder-coated, plas-coated and galvanised steel options

SUPPLY AND INSTALL Qualified and accredited installers • No minimum order quantity

CAD In-house CAD design • .dwg files available for BIM implementation • Free space planning

EXPERTISE Dedicated Project Manager and installation team for each project • Quick quote turn around