



## CASE STUDY TINTAGEL HOUSE, VAUXHALL

### THE PROJECT

The former Met Police HQ which has been redeveloped into a co-working space based on the banks of the Thames. Tintagel House boasts modern design co-working spaces, meeting rooms, roof terraces, bar, cafe, gym and cycle storage for its members. Bellsure were asked by Oakmont Construction to provide the cycle storage for this project.

As requested by Oakmont Construction, we provided quotes on bespoke cycle shelters with a selection of cycle storage for the client. We also supplied CAD designs and .dwg files to build into the clients BIM model. The CAD files that Bellsure provided included specified materials, product recommendations, panel details and security fixings.

### THE SOLUTION

The Streetsure team secured the contract and project managed the supply of the shelters and cycle storage to suit the contractors time frame and budget.

For the cycle storage we supplied our Classic double decker cycle racks, Verti-45 semi vertical cycle racks and classic Citihoop stands. These were space planned strategically to fit as many spaces into the area as possible, and provide a greater return on investment for our client.

Our bespoke CuvaSpan cycle shelters were the chosen option for this project. The shelter was a bespoke powder-coated steel frame with a PETG roof.

Our installers worked alongside the site manager to ensure a smooth snag free handover - complete with an enhanced operations & maintenance manual.

For any advice on amenity products for your project, email [streetsure@bellsure.co.uk](mailto:streetsure@bellsure.co.uk)



We consult, design and build both bespoke and standard solutions for a range of projects. Supply only and supply and install packages available.

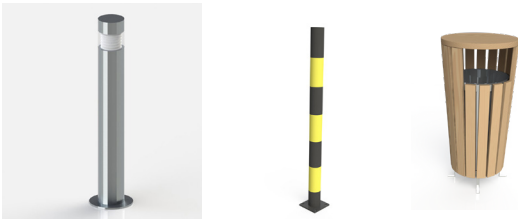
## BENCHES & PLANTERS



## CYCLE PARKING



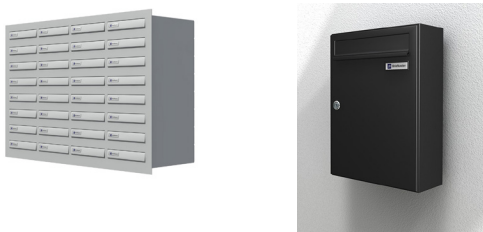
## BINS & BOLLARDS



## SHELTERS & ENCLOSURES



## MAIL BOXES & PARCEL LOCKERS



## GREEN ROOF SHELTERS



## URBAN RELAY SMART LOCKERS



## CAR PARK PRODUCTS



**BESPOKE** Our team can design bespoke solutions or provide 'off the shelf' solutions with reduced lead times

**SUPPLY AND INSTALL** A range of installation options to suit your needs

**CAD** In-house CAD design dwg files available for BIM implementation

**EXPERTISE** Dedicated project management and technical advice for your project